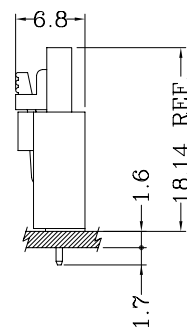


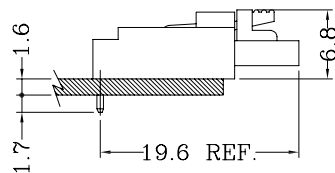
Assembly Layout/装配方案



S-Type/直插型

Specifications/技术参数:

Poles/位数	2~12 Poles
Pitch between poles/间距	2.54mm
Rated Voltage/额定电压	250V AV,DC
Rated Current/额定电流	2.5A (AWG #24)
Withstand Voltage/耐压值	1500V AC/minute
Contact Resistance/接触电阻	30mΩ (MAX.)
Insulation Resistance/绝缘电阻	1000MΩ (MIN.)
Temperature Range/温度范围	-25°C ~ +85°C
Applicable PCB Thickness/适用板厚	1.6mm
Applicable PCB Hole dia./适用孔径	∅1.00±0.05mm
Applicable Wire Range/适用线径	AWG #24~#28

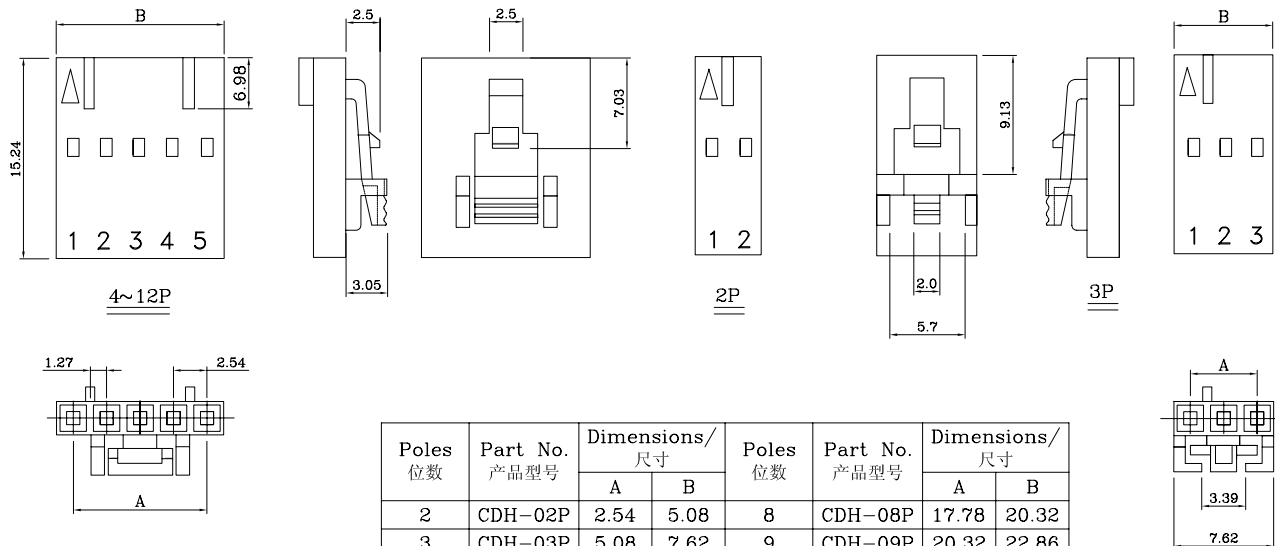


R-Type/弯插型

CD SERIES 2.54mm Pitch Crimp Terminal Socket

Features/产品特性:

- * Single Row Terminal Socket(单排端子塑壳)
- * Material(材质): Nylon 66 UL 94V-0 (Black)
- * Suitable for CD series terminal(适用于CD系列端子)

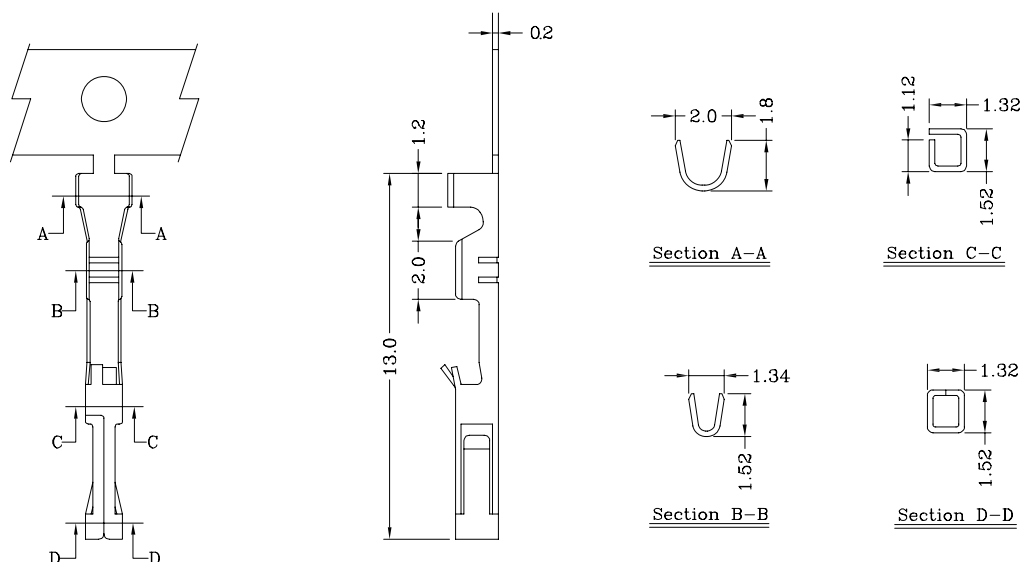


Poles 位数	Part No. 产品型号	Dimensions/ 尺寸		Poles 位数	Part No. 产品型号	Dimensions/ 尺寸	
		A	B			A	B
2	CDH-02P	2.54	5.08	8	CDH-08P	17.78	20.32
3	CDH-03P	5.08	7.62	9	CDH-09P	20.32	22.86
4	CDH-04P	7.62	10.16	10	CDH-10P	22.86	25.40
5	CDH-05P	10.16	12.70	11	CDH-11P	25.40	27.94
6	CDH-06P	12.70	15.24	12	CDH-12P	27.94	30.48
7	CDH-07P	15.24	17.78				

CD SERIES 2.54mm Pitch Crimp Terminal

Features/产品特性:

- * Used in CD series socket(用于CD系列塑壳)

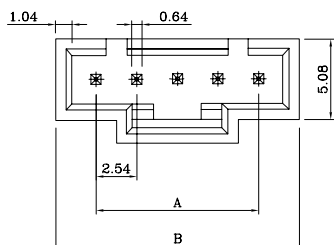


Part No./产品型号	Wire Range/线径范围	Insulation O.D/线外径	Material/材质	Finish/表面处理
CDT-P	AWG #22 ~ #28	1.70(max)	Phosphor bronze	Tin-plated
CDT-PG	AWG #22 ~ #28	1.70(max)	Phosphor bronze	Gold-plated

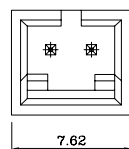
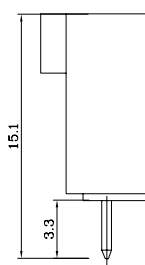
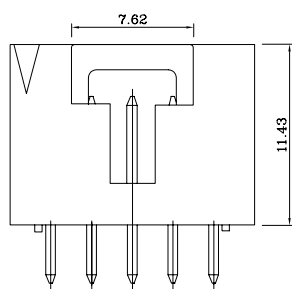
CD SERIES 2.54mm Pitch Wafer (S-Type)

Features/产品特性:

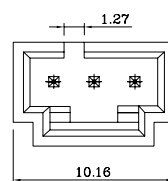
- * Single Row Vertical DIP Wafer(单排直针焊板插座)
- * Material(材质):
Insulator(塑胶本体): PBT UL 94V-0 (Black)
Contacts(接触件): Brass, Tin-Plated
- * Mates with CD series socket(与CD系列塑壳配合)



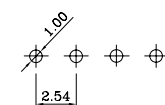
Poles 位数	Part No. 产品型号	Dimensions/ 尺寸		Poles 位数	Part No. 产品型号	Dimensions/ 尺寸	
		A	B			A	B
2	CDS-02P	2.54	--	8	CDS-08P	17.78	22.86
3	CDS-03P	5.08	--	9	CDS-09P	20.32	25.40
4	CDS-04P	7.62	12.70	10	CDS-10P	22.86	27.94
5	CDS-05P	10.16	15.24	11	CDS-11P	25.40	30.48
6	CDS-06P	12.70	17.78	12	CDS-12P	27.94	33.02
7	CDS-07P	15.24	20.32				



2P



3P

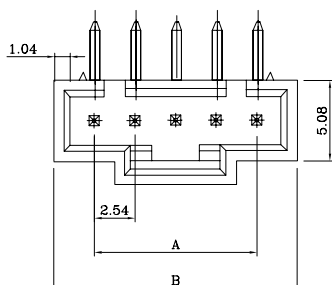


P.C.B LAYOUT
线路板布局图

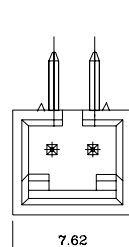
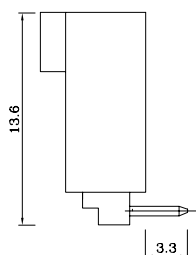
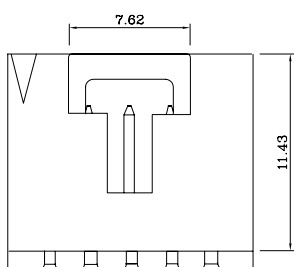
CD SERIES 2.54mm Pitch Wafer (R-Type)

Features/产品特性:

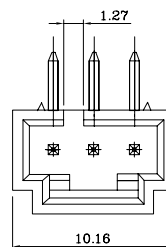
- * Single Row Horizontal DIP Wafer(单排弯针焊板插座)
- * Material(材质):
Insulator(塑胶本体): PBT UL 94V-0 (Black)
Contacts(接触件): Brass, Tin-Plated
- * Mates with CD series socket(与CD系列塑壳配合)



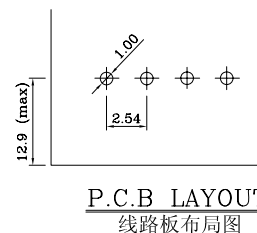
Poles 位数	Part No. 产品型号	Dimensions/ 尺寸		Poles 位数	Part No. 产品型号	Dimensions/ 尺寸	
		A	B			A	B
2	CDR-02P	2.54	--	8	CDR-08P	17.78	22.86
3	CDR-03P	5.08	--	9	CDR-09P	20.32	25.40
4	CDR-04P	7.62	12.70	10	CDR-10P	22.86	27.94
5	CDR-05P	10.16	15.24	11	CDR-11P	25.40	30.48
6	CDR-06P	12.70	17.78	12	CDR-12P	27.94	33.02
7	CDR-07P	15.24	20.32				



2P



3P



P.C.B LAYOUT
线路板布局图