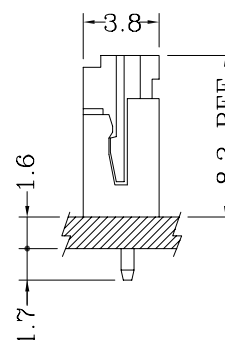


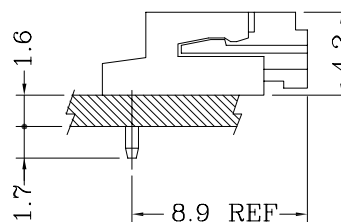
Assembly Layout/装配方案



S-Type/直插型

Specifications/技术参数:

Poles/位数	2~15 Poles
Pitch between poles/间距	2.50mm
Rated Voltage/额定电压	250V AV,DC
Rated Current/额定电流	2.5A (AWG #22)
Withstand Voltage/耐压值	800V AC/minute
Contact Resistance/接触电阻	10mΩ (MAX.)
Insulation Resistance/绝缘电阻	1000MΩ (MIN.)
Temperature Range/温度范围	-25°C ~ +85°C
Applicable PCB Thickness/适用板厚	1.6mm
Applicable PCB Hole dia./适用孔径	∅0.90±0.10 mm
Applicable Wire Range/适用线径	AWG #22~#28

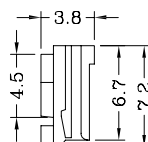
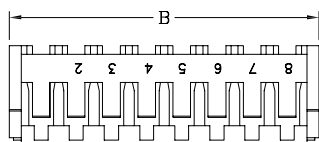
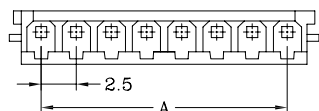


R-Type/弯插型

1131 SERIES 2.50mm Pitch Crimp Terminal Socket

Features/产品特性:

- * Single Row Terminal Socket(单排端子塑壳)
- * Material(材质): Nylon 66 UL 94V-0 (White)
- * Suitable for 1131 series terminal(适用于1131系列端子)

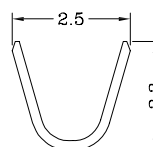
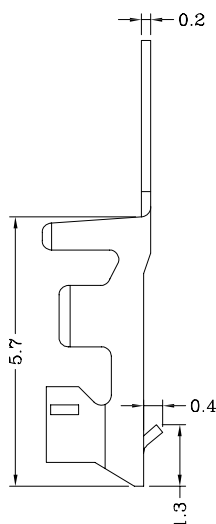
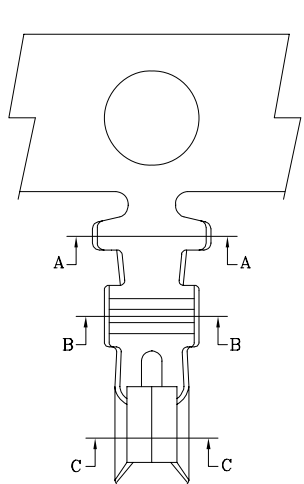


Poles 位数	Part No. 产品型号	Dimensions/尺寸	
		A	B
2	1131H-02P	2.5	7.0
3	1131H-03P	5.0	9.5
4	1131H-04P	7.5	12.0
5	1131H-05P	10.0	14.5
6	1131H-06P	12.5	17.0
7	1131H-07P	15.0	19.5
8	1131H-08P	17.5	22.0
9	1131H-09P	20.0	24.5
10	1131H-10P	22.5	27.0
11	1131H-11P	25.0	29.5
12	1131H-12P	27.5	32.0
13	1131H-13P	30.0	34.5
14	1131H-14P	32.5	37.0
15	1131H-15P	35.0	39.5

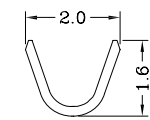
1131 SERIES 2.50mm Pitch Crimp Terminal

Features/产品特性:

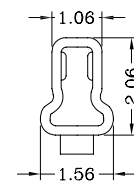
- * Used in 1131 series socket(用于1131系列塑壳)



Section A-A



Section B-B



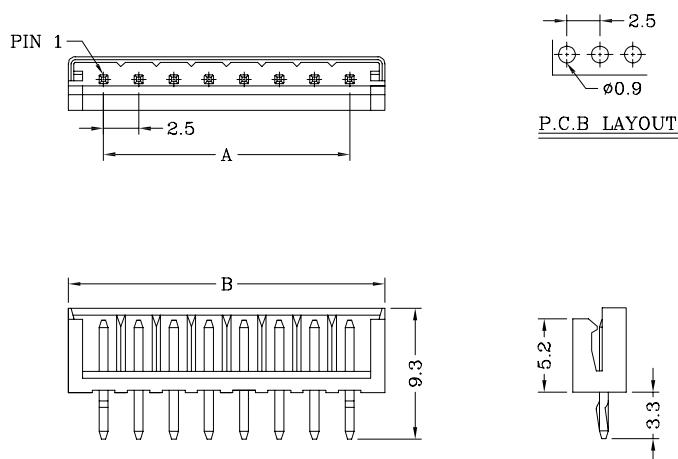
Section C-C

Part No./产品型号	Wire Range/线径范围	Insulation O.D/线外径	Material/材质	Finish/表面处理
1131T	AWG #22 ~ #28	1.80mm(max)	Brass	Tin-plated
1131T-P	AWG #22 ~ #28	1.80mm(max)	Phosphor bronze	Tin-plated

1131 SERIES 2.50mm Pitch Wafer (S-Type)

Features/产品特性:

- * Single Row Vertical DIP Wafer(单排直针焊板插座)
- * Material(材质):
Insulator(塑胶本体): Nylon 66 UL 94V-0 (White)
Contacts(接触件): Brass, Tin-Plated
- * Mates with 1131 series socket(与1131系列塑壳配合)

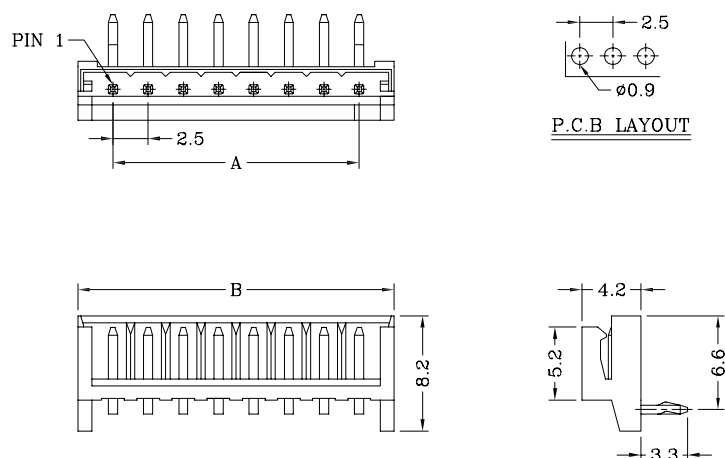


Poles 位数	Part No. 产品型号	Dimensions/尺寸	
		A	B
2	1131S-02P	2.5	7.5
3	1131S-03P	5.0	10.0
4	1131S-04P	7.5	12.5
5	1131S-05P	10.0	15.0
6	1131S-06P	12.5	17.5
7	1131S-07P	15.0	20.0
8	1131S-08P	17.5	22.5
9	1131S-09P	20.0	25.0
10	1131S-10P	22.5	27.5
11	1131S-11P	25.0	30.0
12	1131S-12P	27.5	32.5
13	1131S-13P	30.0	35.0
14	1131S-14P	32.5	37.5
15	1131S-15P	35.0	40.0

1131 SERIES 2.50mm Pitch Wafer (R-Type)

Features/产品特性:

- * Single Row Horizontal DIP Wafer(单排弯针焊板插座)
- * Material(材质):
Insulator(塑胶本体): Nylon 66 UL 94V-0
Contacts(接触件): Brass, Tin-Plated
- * Mates with 1131 series socket(与1131系列塑壳配合)



Poles 位数	Part No. 产品型号	Dimensions/尺寸	
		A	B
2	1131R-02P	2.5	7.5
3	1131R-03P	5.0	10.0
4	1131R-04P	7.5	12.5
5	1131R-05P	10.0	15.0
6	1131R-06P	12.5	17.5
7	1131R-07P	15.0	20.0
8	1131R-08P	17.5	22.5
9	1131R-09P	20.0	25.0
10	1131R-10P	22.5	27.5
11	1131R-11P	25.0	30.0
12	1131R-12P	27.5	32.5
13	1131R-13P	30.0	35.0
14	1131R-14P	32.5	37.5
15	1131R-15P	35.0	40.0