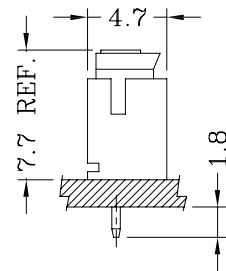
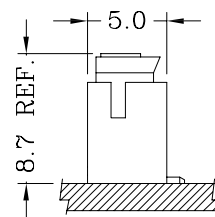


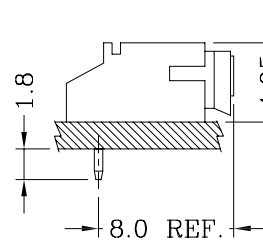
Assembly Layout/装配方案



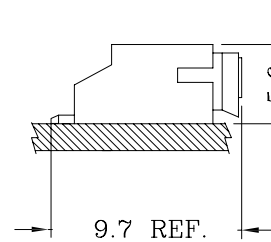
S-Type/直插型



SMS-Type/立贴型



R-Type/弯插型



SMR-Type/卧贴型

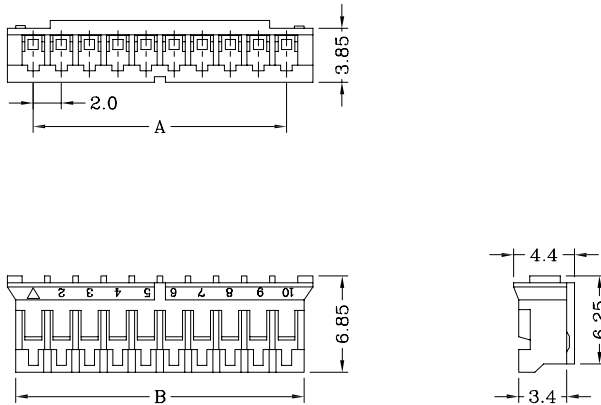
Specifications/技术参数:

Poles/位数	2~16 Poles
Pitch between poles/间距	2.00mm
Rated Voltage/额定电压	100V AV,DC
Rated Current/额定电流	2A (AWG #24)
Withstand Voltage/耐压值	800V AC/minute
Contact Resistance/接触电阻	10mΩ (MAX.)
Insulation Resistance/绝缘电阻	1000MΩ (MIN.)
Temperature Range/温度范围	-25°C ~ +85°C
Applicable PCB Thickness/适用板厚	0.8~1.6mm
Applicable PCB Hole dia./适用孔径	∅0.80±0.05mm
Applicable Wire Range/适用线径	AWG #24~#30

1124 SERIES 2.00mm Pitch Crimp Terminal Socket

Features/产品特性:

- * Single Row Terminal Socket(单排端子塑壳)
- * Material(材质): Nylon 66 UL 94V-0 (White)
- * Suitable for 1124 series terminal(适用于1124系列端子)

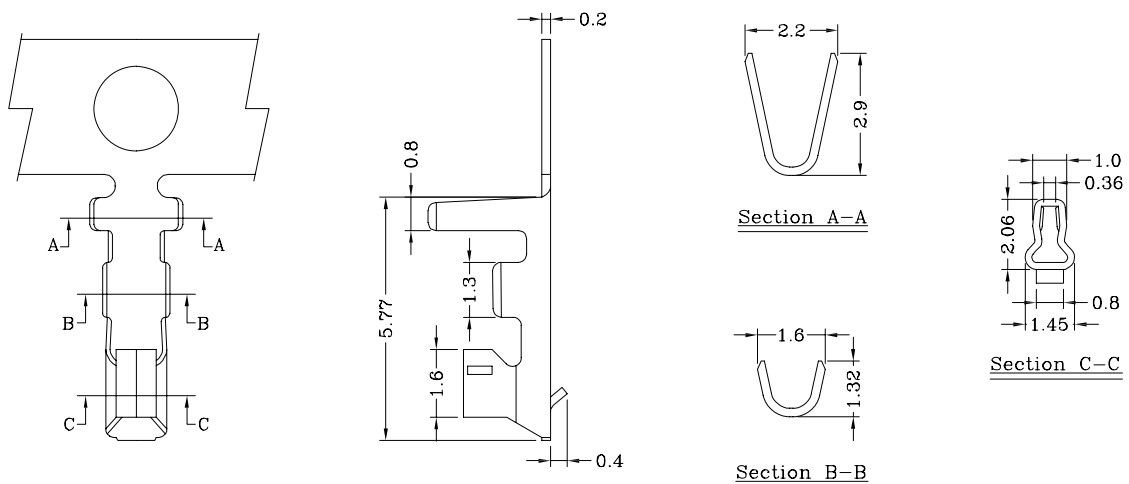


Poles 位数	Part No. 产品型号	Dimensions/尺寸	
		A	B
2	1124H-02P	2.0	4.50
3	1124H-03P	4.0	6.50
4	1124H-04P	6.0	8.50
5	1124H-05P	8.0	10.50
6	1124H-06P	10.0	12.50
7	1124H-07P	12.0	14.50
8	1124H-08P	14.0	16.50
9	1124H-09P	16.0	18.50
10	1124H-10P	18.0	20.50
11	1124H-11P	20.0	22.50
12	1124H-12P	22.0	24.50
13	1124H-13P	24.0	26.50
14	1124H-14P	26.0	28.50
15	1124H-15P	28.0	30.50
16	1124H-16P	30.0	32.50

1124 SERIES 2.00mm Pitch Crimp Terminal

Features/产品特性:

- * Used in 1124 series socket(用于1124系列塑壳)

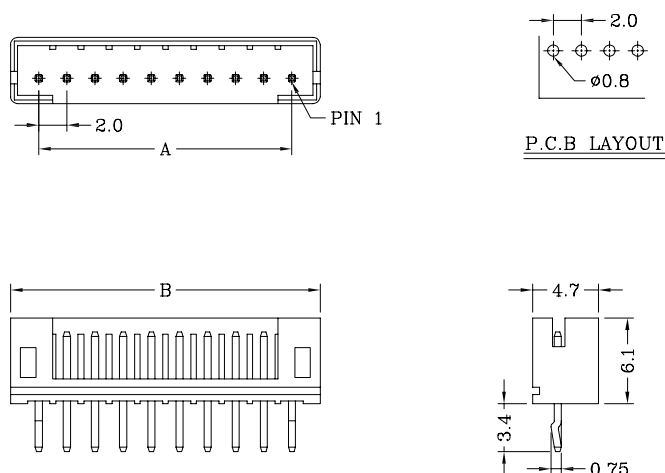


Part No./产品型号	Wire Range/线径范围	Insulation O.D/线外径	Material/材质	Finish/表面处理
1124T	AWG #24 ~ #30	1.4mm(max)	Brass	Tin-plated
1124T-P	AWG #24 ~ #30	1.4mm(max)	Phosphor bronze	Tin-plated

1124 SERIES 2.00mm Pitch Wafer (S- Type)

Features/产品特性:

- * Single Row Vertical DIP Wafer(单排直针焊板插座)
- * Material(材质):
Insulator(塑胶本体): Nylon 66 UL 94V-0 (White)
Contacts(接触件): Brass,Tin-Plated
- * Mates with 1124 series socket(与1124系列塑壳配合)

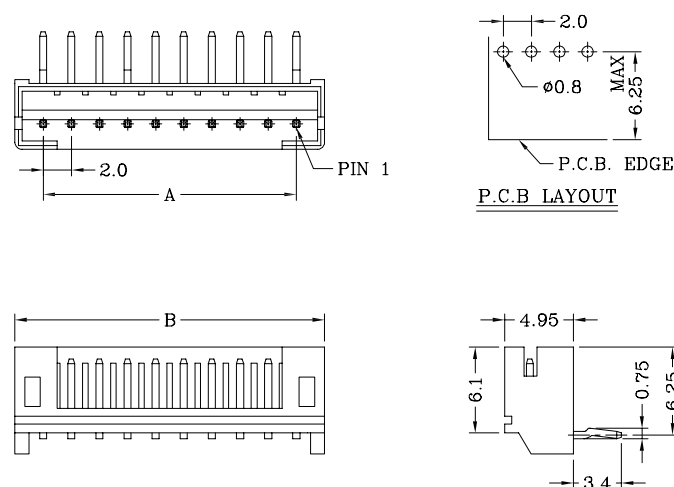


Poles 位数	Part No. 产品型号	Dimensions/尺寸	
		A	B
2	1124S-02P	2.0	6.0
3	1124S-03P	4.0	8.0
4	1124S-04P	6.0	10.0
5	1124S-05P	8.0	12.0
6	1124S-06P	10.0	14.0
7	1124S-07P	12.0	16.0
8	1124S-08P	14.0	18.0
9	1124S-09P	16.0	20.0
10	1124S-10P	18.0	22.0
11	1124S-11P	20.0	24.0
12	1124S-12P	22.0	26.0
13	1124S-13P	24.0	28.0
14	1124S-14P	26.0	30.0
15	1124S-15P	28.0	32.0
16	1124S-16P	30.0	34.0

1124 SERIES 2.00mm Pitch Wafer (R- Type)

Features/产品特性:

- * Single Row Horizontal DIP Wafer(单排弯针焊板插座)
- * Material(材质):
Insulator(塑胶本体): Nylon 66 UL 94V-0 (White)
Contacts(接触件): Brass,Tin-Plated
- * Mates with 1124 series socket(与1124系列塑壳配合)

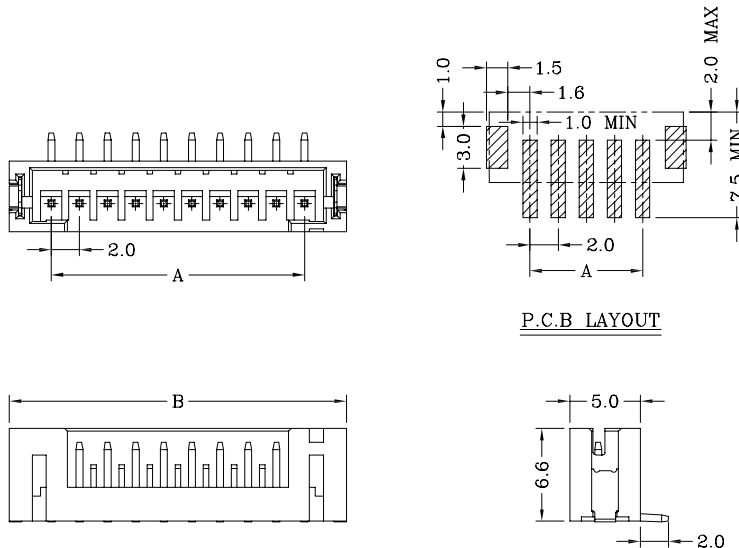


Poles 位数	Part No. 产品型号	Dimensions/尺寸	
		A	B
2	1124R-02P	2.0	6.0
3	1124R-03P	4.0	8.0
4	1124R-04P	6.0	10.0
5	1124R-05P	8.0	12.0
6	1124R-06P	10.0	14.0
7	1124R-07P	12.0	16.0
8	1124R-08P	14.0	18.0
9	1124R-09P	16.0	20.0
10	1124R-10P	18.0	22.0
11	1124R-11P	20.0	24.0
12	1124R-12P	22.0	26.0
13	1124R-13P	24.0	28.0
14	1124R-14P	26.0	30.0
15	1124R-15P	28.0	32.0
16	1124R-16P	30.0	34.0

1124 SERIES 2.00mm Pitch Wafer (SMS- Type)

Features/产品特性:

- * Single Row Vertical SMT Wafer(单排立贴插座)
- * Material(材质):
 - Insulator(塑胶本体): Nylon 9T UL 94V-0
 - Contacts(接触件): Brass,Tin-Plated
 - Solder Tab(焊盘片): Brass,Tin-plated
- * Mates with 1124 series socket(与1124系列塑壳配合)

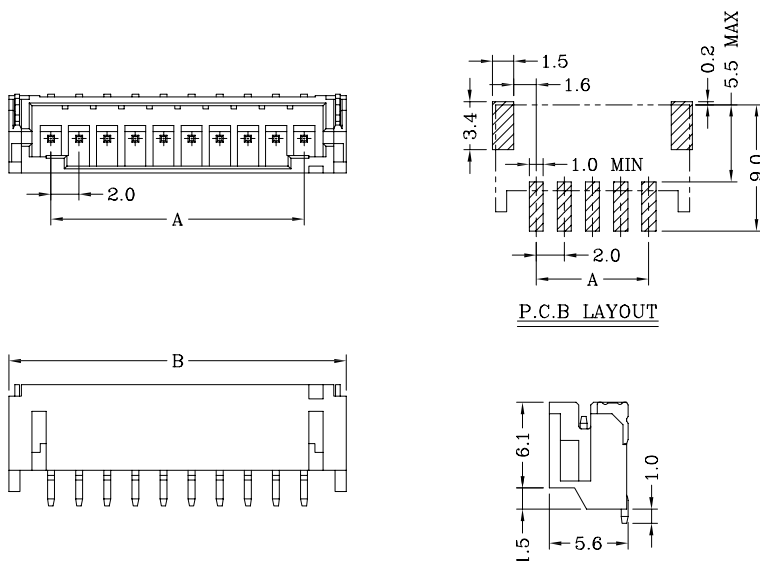


Poles 位数	Part No. 产品型号	Dimensions/尺寸	
		A	B
2	1124SMS-02P	2.0	8.0
3	1124SMS-03P	4.0	10.0
4	1124SMS-04P	6.0	12.0
5	1124SMS-05P	8.0	14.0
6	1124SMS-06P	10.0	16.0
7	1124SMS-07P	12.0	18.0
8	1124SMS-08P	14.0	20.0
9	1124SMS-09P	16.0	22.0
10	1124SMS-10P	18.0	24.0
11	1124SMS-11P	20.0	26.0
12	1124SMS-12P	22.0	28.0
13	1124SMS-13P	24.0	30.0
14	1124SMS-14P	26.0	32.0
15	1124SMS-15P	28.0	34.0

1124 SERIES 2.00mm Pitch Wafer (SMR- Type)

Features/产品特性:

- * Single Row Horizontal SMT Wafer(单排卧贴插座)
- * Material(材质):
 - Insulator(塑胶本体): Nylon 9T UL 94V-0
 - Contacts(接触件): Brass,Tin-Plated
 - Solder Tab(焊盘片): Brass,Tin-plated
- * Mates with 1124 series socket(与1124系列塑壳配合)



Poles 位数	Part No. 产品型号	Dimensions/尺寸	
		A	B
2	1124SMR-02P	2.0	8.0
3	1124SMR-03P	4.0	10.0
4	1124SMR-04P	6.0	12.0
5	1124SMR-05P	8.0	14.0
6	1124SMR-06P	10.0	16.0
7	1124SMR-07P	12.0	18.0
8	1124SMR-08P	14.0	20.0
9	1124SMR-09P	16.0	22.0
10	1124SMR-10P	18.0	24.0
11	1124SMR-11P	20.0	26.0
12	1124SMR-12P	22.0	28.0
13	1124SMR-13P	24.0	30.0
14	1124SMR-14P	26.0	32.0
15	1124SMR-15P	28.0	34.0