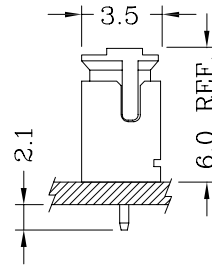
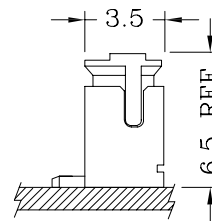


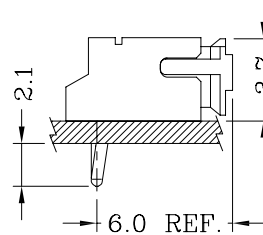
Assembly Layout/装配方案



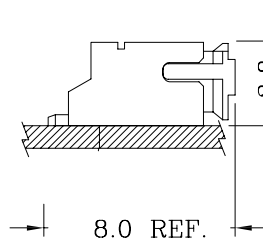
S-Type/直插型



SMS-Type/立贴型



R-Type/弯插型



SMR-Type/卧贴型

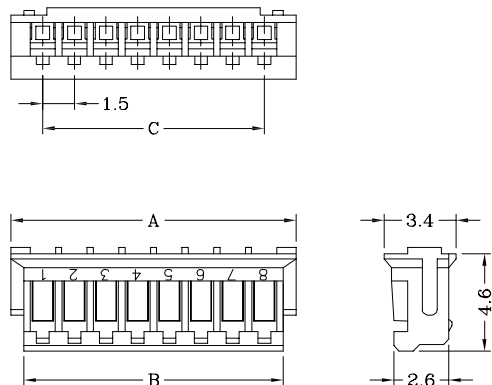
Specifications/技术参数:

Poles/位数	2~15 Poles
Pitch between poles/间距	1.50mm
Rated Voltage/额定电压	50V AV,DC
Rated Current/额定电流	1A (AWG #28)
Withstand Voltage/耐压值	500V AC/minute
Contact Resistance/接触电阻	20mΩ (MAX.)
Insulation Resistance/绝缘电阻	500MΩ (MIN.)
Temperature Range/温度范围	-25°C ~ +85°C
Applicable PCB Thickness/适用板厚	0.6~1.2mm
Applicable PCB Hole dia./适用孔径	φ0.70±0.03mm
Applicable Wire Range/适用线径	AWG #28~#32

## 1150 SERIES 1.50mm Pitch Crimp Terminal Socket

Features/产品特性:

- \* Single Row Terminal Socket(单排端子塑壳)
- \* Material(材质): Nylon 66 UL 94V-0 (White)
- \* Suitable for 1150 series terminal(适用于1150系列端子)

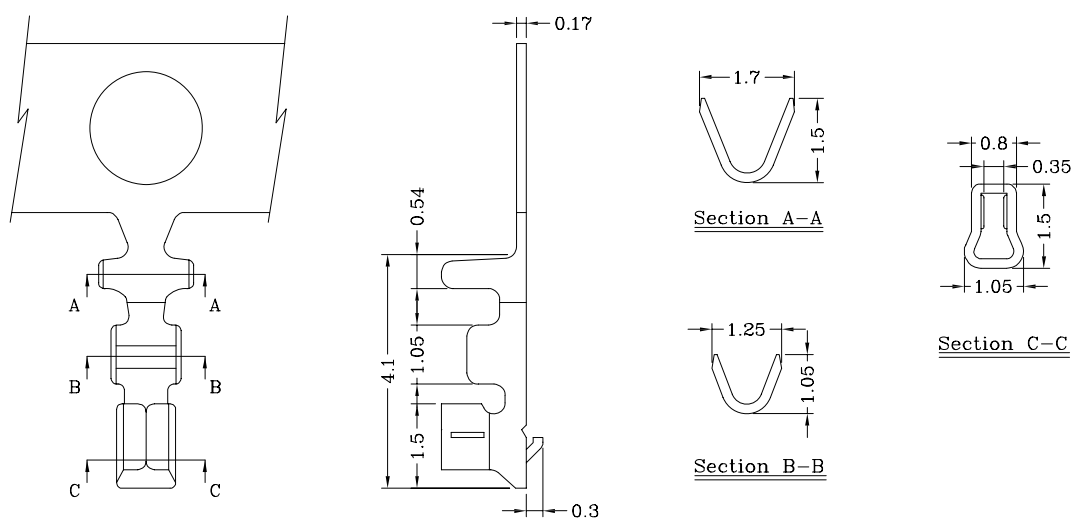


Poles 位数	Part No. 产品型号	Dimensions/尺寸		
		A	B	C
2	1150H-02P	4.5	3.3	1.5
3	1150H-03P	6.0	4.8	3.0
4	1150H-04P	7.5	6.3	4.5
5	1150H-05P	9.0	7.8	6.0
6	1150H-06P	10.5	9.3	7.5
7	1150H-07P	12.0	10.8	9.0
8	1150H-08P	13.5	12.3	10.5
9	1150H-09P	15.0	13.8	12.0
10	1150H-10P	16.5	15.3	13.5
11	1150H-11P	18.0	16.8	15.0
12	1150H-12P	19.5	18.3	16.5
13	1150H-13P	21.0	19.8	18.0
14	1150H-14P	22.5	21.3	19.5
15	1150H-15P	24.0	22.8	21.0

## 1150 SERIES 1.50mm Pitch Crimp Terminal

Features/产品特性:

- \* Used in 1150 series socket(用于1150系列塑壳)

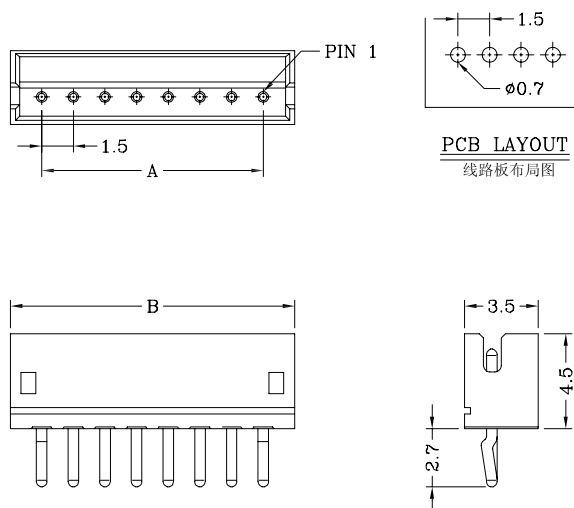


Part No./产品型号	Wire Range/线径范围	Insulation O.D/线外径	Material/材质	Finish/表面处理
1150T-P	AWG #28 ~ #32	0.9mm(max)	Phosphor bronze	Tin-plated

## 1150 SERIES 1.50mm Pitch Wafer ( S- Type )

Features/产品特性:

- \* Single Row Vertical DIP Wafer(单排直针焊板插座)
- \* Material(材质):  
Insulator(塑胶本体): Nylon 6T UL 94V-0 (White)  
Contacts(接触件): Brass,Tin-Plated
- \* Mates with 1150 series socket(与1150系列塑壳配合)

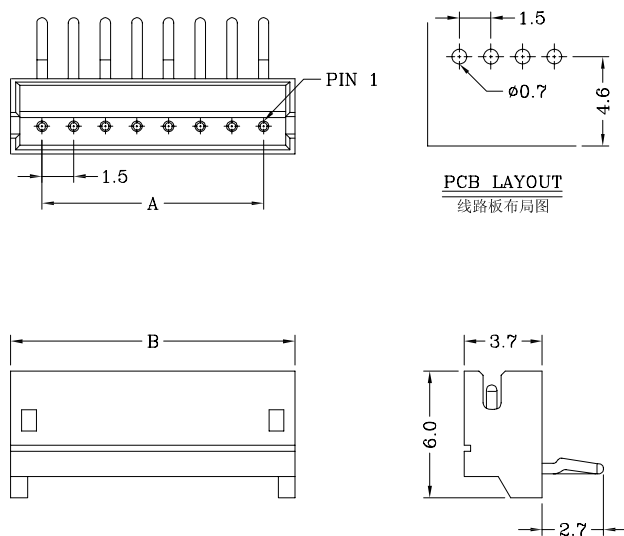


Poles 位数	Part No. 产品型号	Dimensions/尺寸	
		A	B
2	1150S-02P	1.5	4.5
3	1150S-03P	3.0	6.0
4	1150S-04P	4.5	7.5
5	1150S-05P	6.0	9.0
6	1150S-06P	7.5	10.5
7	1150S-07P	9.0	12.0
8	1150S-08P	10.5	13.5
9	1150S-09P	12.0	15.0
10	1150S-10P	13.5	16.5
11	1150S-11P	15.0	18.0
12	1150S-12P	16.5	19.5
13	1150S-13P	18.0	21.0
14	1150S-14P	19.5	22.5
15	1150S-15P	21.0	24.0

## 1150 SERIES 1.50mm Pitch Wafer ( R- Type )

Features/产品特性:

- \* Single Row Horizontal DIP Wafer(单排弯针焊板插座)
- \* Material(材质):  
Insulator(塑胶本体): Nylon 6T UL 94V-0 (White)  
Contacts(接触件): Brass,Tin-Plated
- \* Mates with 1150 series socket(与1150系列塑壳配合)



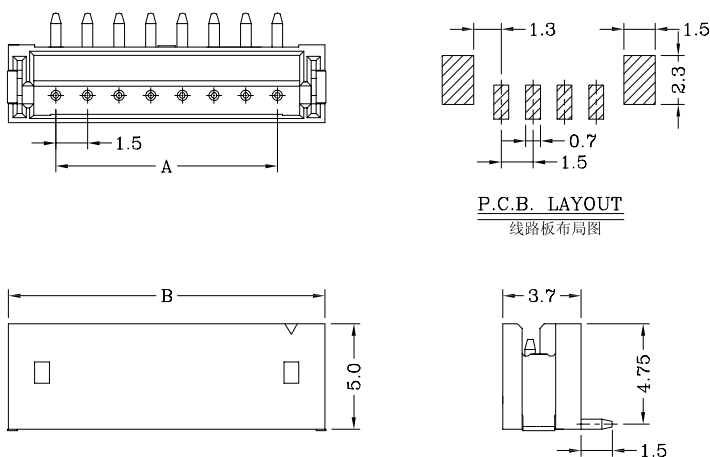
Dimension :

Circuits 位数	Part No. 产品型号	Dimensions/尺寸	
		A	B
2	1150R-02P	1.5	4.5
3	1150R-03P	3.0	6.0
4	1150R-04P	4.5	7.5
5	1150R-05P	6.0	9.0
6	1150R-06P	7.5	10.5
7	1150R-07P	9.0	12.0
8	1150R-08P	10.5	13.5
9	1150R-09P	12.0	15.0
10	1150R-10P	13.5	16.5
11	1150R-11P	15.0	18.0
12	1150R-12P	16.5	19.5
13	1150R-13P	18.0	21.0
14	1150R-14P	19.5	22.5
15	1150R-15P	21.0	24.0

## 1150 SERIES 1.50mm Pitch Wafer ( SMS- Type )

Features/产品特性:

- \* Single Row Vertical SMT Wafer(单排立贴插座)
- \* Material(材质):  
 Insulator(塑胶本体): Nylon 6T UL 94V-0  
 Contacts(接触件): Brass,Tin-Plated  
 Solder Tab(焊盘片): Brass,Tin-plated
- \* Mates with 1150 series socket(与1150系列塑壳配合)

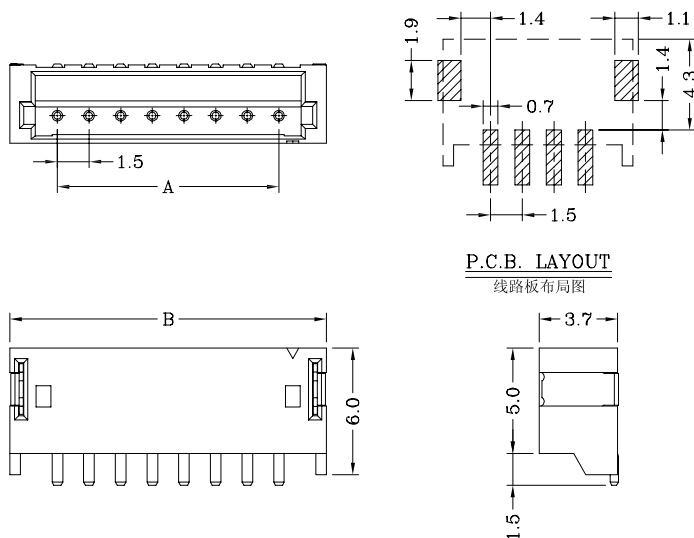


Poles 位数	Part No. 产品型号	Dimensions/尺寸	
		A	B
2	1150SMS-02P	1.5	6.0
3	1150SMS-03P	3.0	7.5
4	1150SMS-04P	4.5	9.0
5	1150SMS-05P	6.0	10.5
6	1150SMS-06P	7.5	12.0
7	1150SMS-07P	9.0	13.5
8	1150SMS-08P	10.5	15.0
9	1150SMS-09P	12.0	16.5
10	1150SMS-10P	13.5	18.0
11	1150SMS-11P	15.0	19.5
12	1150SMS-12P	16.5	21.0
13	1150SMS-13P	18.0	22.5
14	1150SMS-14P	19.5	24.0
15	1150SMS-15P	21.0	25.5

## 1150 SERIES 1.50mm Pitch Wafer ( SMR- Type )

Features/产品特性:

- \* Single Row Horizontal SMT Wafer(单排卧贴插座)
- \* Material(材质):  
 Insulator(塑胶本体): Nylon 6T UL 94V-0 (White)  
 Contacts(接触件): Brass,Tin-Plated  
 Solder Tab(焊盘片): Brass,Yin-plated
- \* Mates with 1150 series socket(与1150系列塑壳配合)



Poles 位数	Part No. 产品型号	Dimensions/尺寸	
		A	B
2	1150SMR-02P	1.5	6.0
3	1150SMR-03P	3.0	7.5
4	1150SMR-04P	4.5	9.0
5	1150SMR-05P	6.0	10.5
6	1150SMR-06P	7.5	12.0
7	1150SMR-07P	9.0	13.5
8	1150SMR-08P	10.5	15.0
9	1150SMR-09P	12.0	16.5
10	1150SMR-10P	13.5	18.0
11	1150SMR-11P	15.0	19.5
12	1150SMR-12P	16.5	21.0
13	1150SMR-13P	18.0	22.5
14	1150SMR-14P	19.5	24.0
15	1150SMR-15P	21.0	25.5