

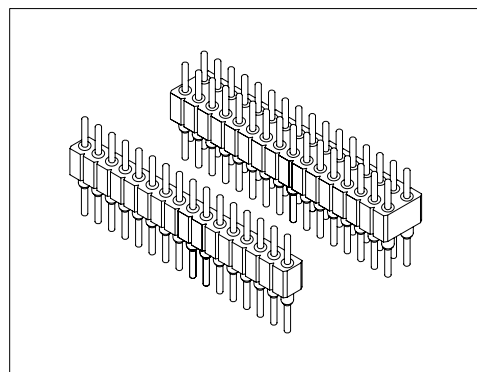
Specifications/技术参数:

Electrical/电气特性:

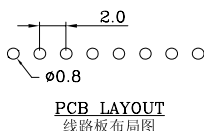
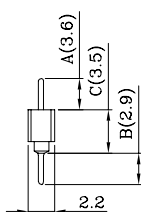
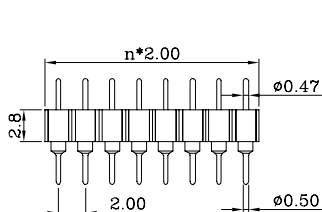
Current Rating (额定电流): 3A
 Withstand Voltage (耐压值): 1000VAC for one minute
 Contact Resistance (接触电阻): 10mΩ max
 Insulation Resistance (绝缘电阻): 1000MΩ min
 Operating Temperature (工作温度): -55°C ~ +125°C

Physical/物理特性:

Insulator (塑胶本体): PPS
 Flammability Rating (防火等级): UL 94V-0
 Contacts (接触件): Brass
 Pin Diameter (圆针直径): $\phi 0.47$
 Mechanical life (机械寿命): 500 cycles min

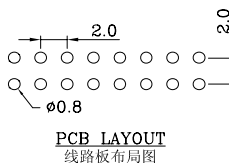
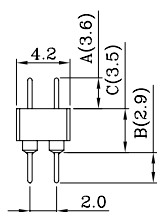
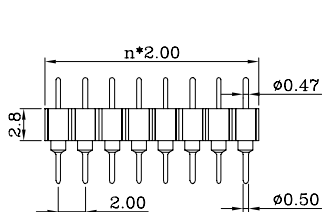


Dimension/尺寸: mm



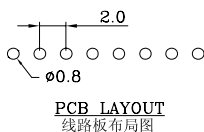
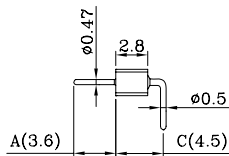
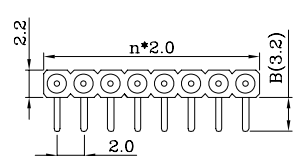
6101-2S-1*nPG-3.6/3.5/2.9

Straight pin connector: solder tail
 single row
 单排直针焊板连接器
 Poles/位数: 2 to 40 contacts
 Standard number of contacts/常用芯数: 40



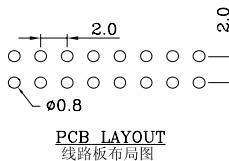
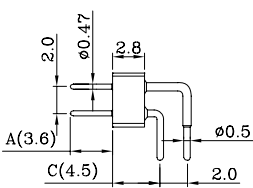
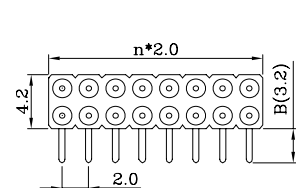
6101-2S-2*nPG-3.6/3.5/2.9

Straight pin connector: solder tail,
 double row
 双排直针焊板连接器
 Poles/位数: 4 to 80 contacts
 Standard number of contacts/常用芯数: 40



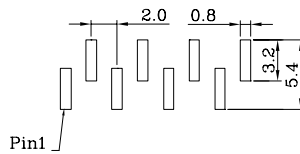
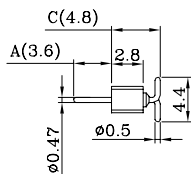
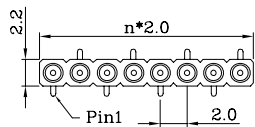
6101-2R-1*nPG-3.6/4.5/3.2

Right angle pin connector: solder tail,
 single row
 单排弯针焊板连接器
 Poles/位数: 2 to 40 contacts
 Standard number of contacts/常用芯数: 40



6101-2R-2*nPG-3.6/4.5/3.2

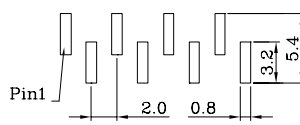
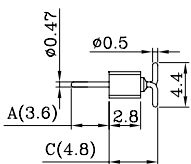
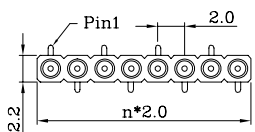
Right pin connector: solder tail,
 double row
 双排弯针焊板连接器
 Poles/位数: 4 to 80 contacts
 Standard number of contacts/常用芯数: 80



PCB LAYOUT (Type-A)
正脚位 线路板布局图

6101-2SMS-1*nPG-3.6/4.8-A

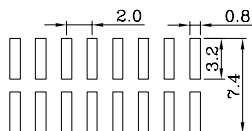
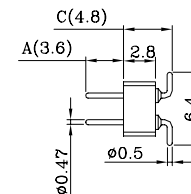
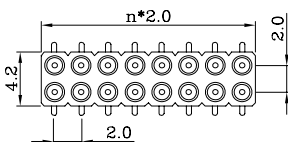
SMT pin connector: single row perpendicular mount
单排立贴焊板连接器(正脚位)
Poles/位数: 2 to 40 contacts
Standard number of contacts/常用芯数: 40



PCB LAYOUT (Type-B)
反脚位 线路板布局图

6101-2SMS-1*nPG-3.6/4.8-B

SMT pin connector: single row perpendicular mount
单排立贴焊板连接器(反脚位)
Poles/位数: 2 to 40 contacts
Standard number of contacts/常用芯数: 40

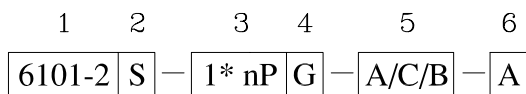


PCB LAYOUT
线路板布局图

6101-2SMS-2*nPG-3.6/4.8

SMT pin connector: double row perpendicular mount
双排立贴焊板连接器
Poles/位数: 4 to 80 contacts
Standard number of contacts/常用芯数: 80

Ordering Code/订购型号:



1. Series No./系列号: 6101-2

2. PCB Mount Type/安装类型:

S = Straight (直插)

R = Right Angle (弯插)

SMS = Vertical SMT Type (立贴)

3. Poles/位数:

Single/单排: 1*2P~40P

Dual/双排: 2*2P~40P

4. Contact Plating/接触件电镀:

S = Selective Gold(半金)

G = Gold Flash(全金)

5. Dimension/尺寸: A/C/B

6. PCB Mount Style/安装方式:

A = Type-A (正脚位)

B = Type-B (反脚位)