

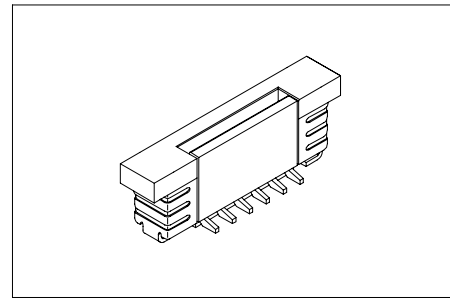
Specifications/技术参数:

Electrical/电气特性:

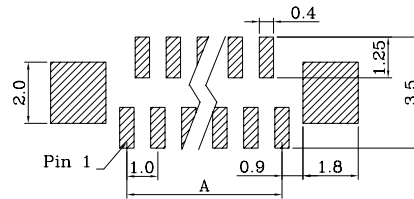
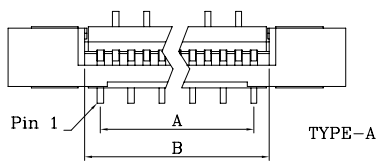
Current Rating (额定电流): 0.5A
 Voltage Rating (额定电压): 50V
 Withstand Voltage (耐压值): 500VAC for one minute
 Contact Resistance (接触电阻): 30mΩ max
 Insulation Resistance (绝缘电阻): 500MΩ min
 Operating Temperature (工作温度): -25°C ~ +85°C

Physical/物理特性:

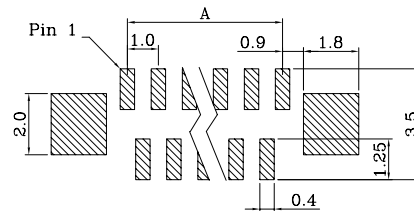
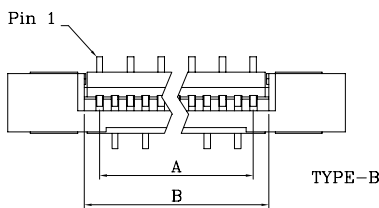
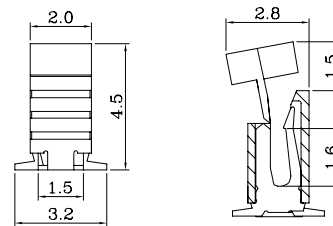
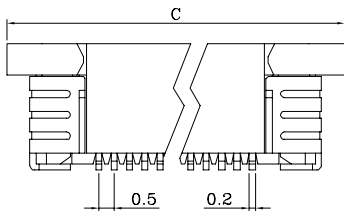
Insulator (塑胶本体): Nylon46
 Flammability Rating (防火等级): UL 94V-0
 Contacts (接触件): Phosphor Bronze
 Contacts plating (接触件电镀): Tin-plated



Dimension/尺寸: mm

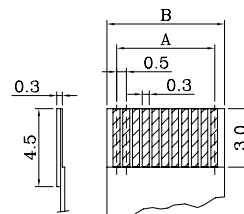


PCB LAYOUT(TYPE-A)
线路板布局图(正脚位)



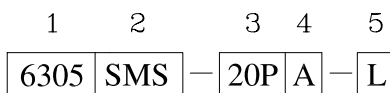
PCB LAYOUT(TYPE-B)
线路板布局图(反脚位)

A = 0.5*No. of Positions - 0.5
 B = 0.5*No. of Positions + 0.6
 C = 0.5*No. of Positions + 5.7



Applicable FFC
适用的FFC线

Ordering Code/订购型号:



1. Series No./系列号: 6305
2. PCB Mount Type/安装类型:
SMS = Vertical SMT (立贴)
3. Poles/位数:
04P ~ 40P
4. PCB Mount Style/安装方式:
A = Type-A (正脚位)
B = Type-B (反脚位)
5. Options/选项:
L = With Lock (带锁扣)