

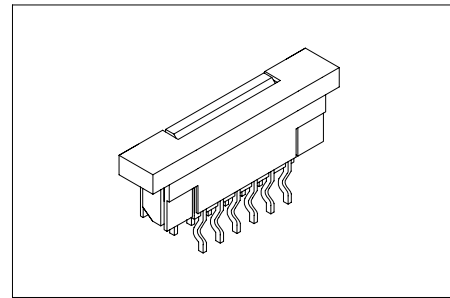
Specifications/技术参数:

**Electrical/电气特性:**

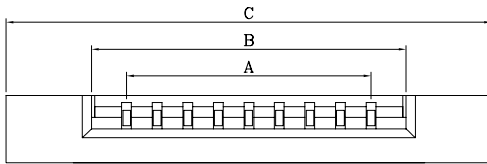
Current Rating (额定电流): 0.5A  
 Voltage Rating (额定电压): 50V  
 Withstand Voltage (耐压值): 500VAC for one minute  
 Contact Resistance (接触电阻): 30mΩ max  
 Insulation Resistance (绝缘电阻): 500MΩ min  
 Operating Temperature (工作温度): -25°C ~ +85°C

**Physical/物理特性:**

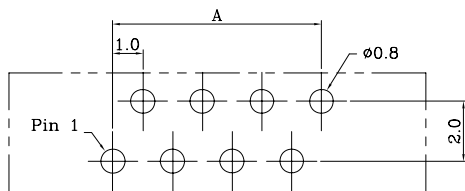
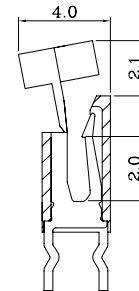
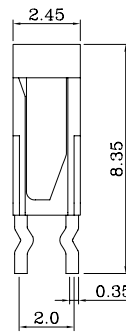
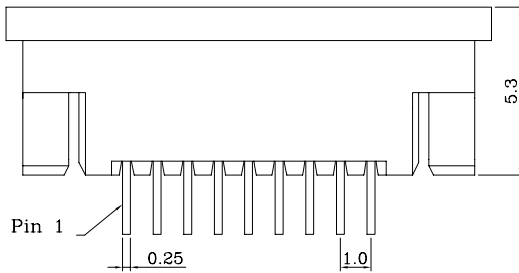
Insulator (塑胶本体): Nylon46  
 Flammability Rating (防火等级): UL 94V-0  
 Contacts (接触件): Phosphor Bronze  
 Contacts plating (接触件电镀): Tin-plated



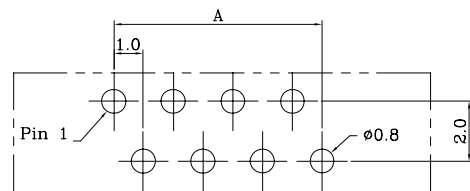
Dimension/尺寸: mm



A = 1.0 \* No. of Positions - 1.0  
 B = 1.0 \* No. of Positions + 1.1  
 C = 1.0 \* No. of Positions + 7.0

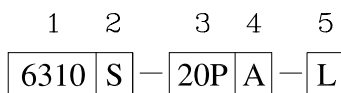


PCB LAYOUT (TYPE-A)  
线路板布局图 (正脚位)



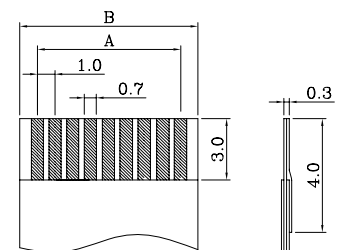
PCB LAYOUT (TYPE-B)  
线路板布局图 (反脚位)

Ordering Code/订购型号:



1. Series No./系列号: 6310
2. PCB Mount Type/安装类型:  
S = Vertical DIP (直插)
3. Poles/位数:  
04P ~ 40P

4. PCB Mount Style/安装方式:  
A = Type-A (正脚位)  
B = Type-B (反脚位)
5. Options/选项:  
L = With Lock (带锁扣)



Applicable FFC  
适用的FFC线