

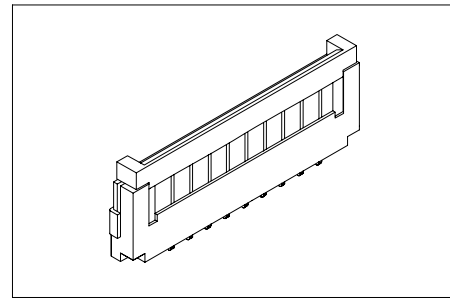
Specifications/技术参数:

**Electrical/电气特性:**

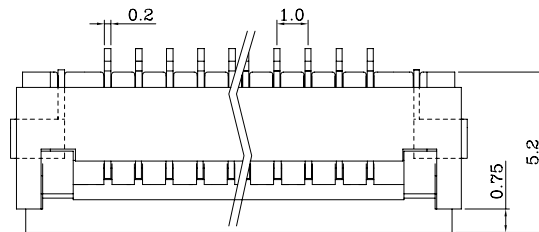
Current Rating (额定电流): 0.5A  
 Voltage Rating (额定电压): 50V  
 Withstand Voltage (耐压值): 500VAC for one minute  
 Contact Resistance (接触电阻): 30mΩ max  
 Insulation Resistance (绝缘电阻): 500MΩ min  
 Operating Temperature (工作温度): -25°C ~ +85°C

**Physical/物理特性:**

Insulator (塑胶本体): Nylon46  
 Flammability Rating (防火等级): UL 94V-0  
 Contacts (接触件): Phosphor Bronze  
 Contacts plating (接触件电镀): Tin-plated



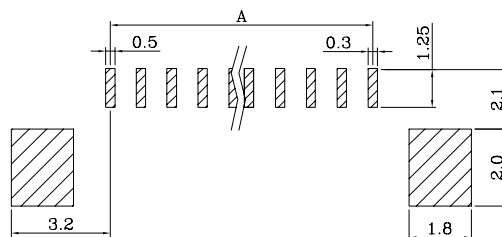
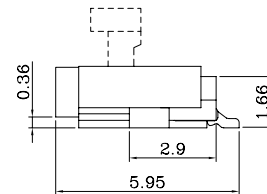
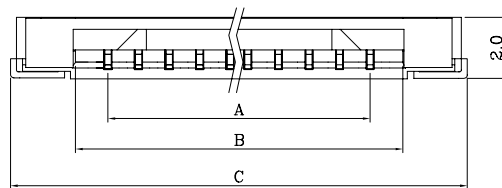
Dimension/尺寸: mm



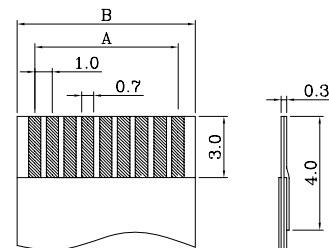
$$A = 1.0 * \text{No. of Positions} - 1.0$$

$$B = 1.0 * \text{No. of Positions} + 1.1$$

$$C = 1.0 * \text{No. of Positions} + 5.4$$



PCB LAYOUT  
线路板布局图



Applicable FFC  
适用的FFC线

Ordering Code/订购型号:

1	2	3	4	5
6310	SMP	20P	B	L

- Series No./系列号: 6310
- PCB Mount Type/安装类型:  
SMP = Horizontal SMT(翻盖式卧贴)
- Poles/位数:  
04P ~ 40P

- Contact Style/接触方式:  
B = Bottom Contact (下触)
- Options/选项:  
L = With Lock (带锁扣)