

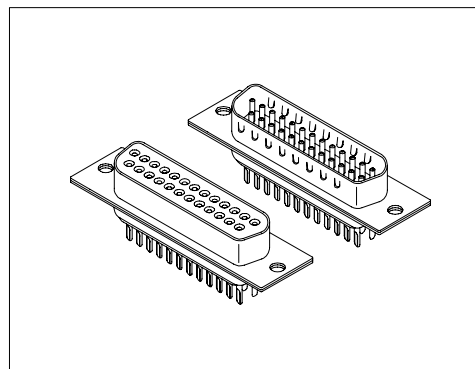
## Specifications/技术参数:

### Electrical/电气特性:

Current Rating (额定电流): 3A  
 Withstand Voltage (耐压值): 1000VAC for one minute  
 Contact Resistance (接触电阻): 20mΩ max  
 Insulation Resistance (绝缘电阻): 5000MΩ min  
 Operating Temperature (工作温度): -40°C ~ +105°C

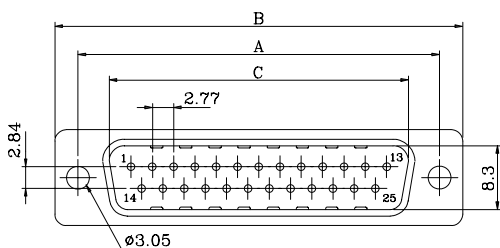
### Physical/物理特性:

Insulator (塑胶本体): Glass Filled Polyester  
 Flammability Rating (防火等级): UL 94V-0  
 Contacts (接触件): Copper alloy  
 Contacts plating (接触件电镀): Selective gold plating on surface contact area



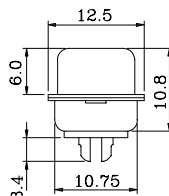
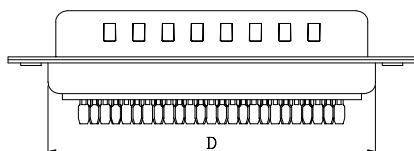
## Dimension/尺寸: mm

### Male/公针:

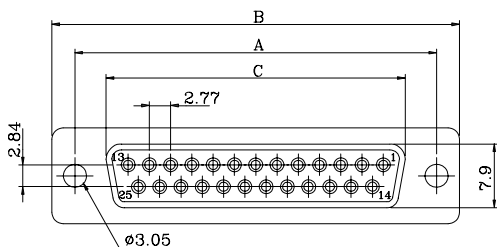


Dimension/尺寸:

Poles	Dim A	Dim B	Dim C	Dim D
9	25.0	30.8	16.92	19.2
15	33.32	39.2	25.25	27.7
25	47.04	53.1	38.96	41.1
37	63.5	69.4	55.42	57.3

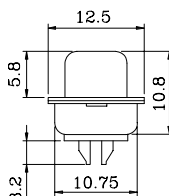
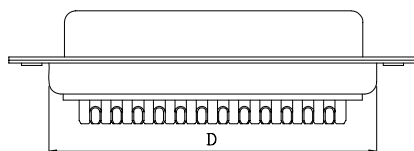


### Female/母孔:

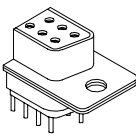
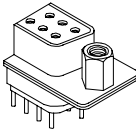
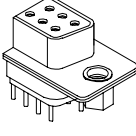


Dimension/尺寸:

Poles	Dim A	Dim B	Dim C	Dim D
9	25.0	30.8	16.3	19.3
15	33.32	39.2	24.6	27.7
25	47.04	53.1	38.3	41.1
37	63.5	69.4	54.8	57.3



Mounting Options/安装选项:

AA	Riveted front and rear shell with $\varnothing 3.05\text{mm}$ Hole	CB	Riveted #4-40 UNC close nuts on front shell
 <p>光孔 <math>\varnothing 3.05</math></p>		 <p>前铆#4-40六角螺柱</p>	
		 <p>后铆#4-40六角螺柱</p>	

Ordering Code/订购型号:

1	2	3	4	5	6
DB	15	F	G	AA	3

1. Series No./系列号:

DB

2. Poles/位数:

9、15、25、37

3. Contacts type/接触件类型:

M = Male(公针)

F = Female(母孔)

A = Male machined contact(车制公针)

B = Female machined contact(车制母孔)

C = Male one piece body(一体式公针)

D = Female one piece body(一体式母孔)

4. Contacts plating/接触件电镀:

S = Selective Gold(半金)

G = Gold flash(全金)

G5 = 5 $\mu$ " Gold(镀金5 $\mu$ " )

5. Mounting options/安装选项:

AA = With  $\varnothing 3.05\text{mm}$  holes on shell (带 $\varnothing 3.05\text{mm}$ 光孔)

CB = Riveted #4-40 UNC close nuts on front shell(前铆#4-40螺丝)

CE = Riveted #4-40 UNC open nuts on rear shell(后铆#4-40螺丝)

6. Insulator color/胶体颜色:

1 = White(白色)

2 = Blue(蓝色)

3 = Black(黑色)

4 = Grey(灰色)