

# 301 SERIES 2.54mm Fully Shrouded Polarized Headers

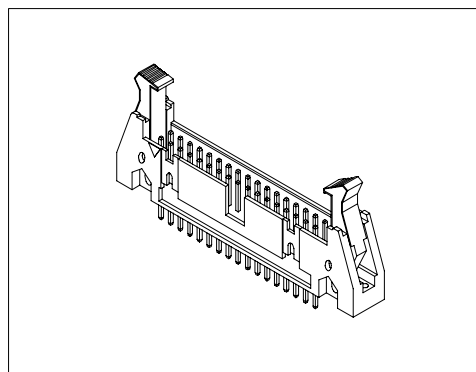
## Specifications/技术参数:

### Electrical/电气特性:

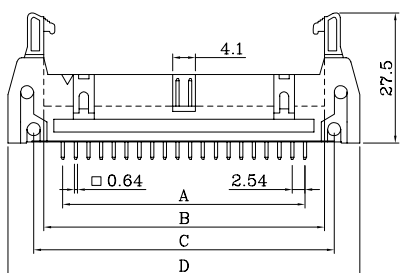
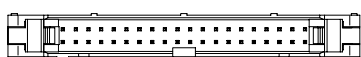
Current Rating (额定电流): 1A  
 Withstand Voltage (耐压值): 500VAC for one minute  
 Contact Resistance (接触电阻): 30mΩ max  
 Insulation Resistance (绝缘电阻): 1000MΩ min  
 Operating Temperature (工作温度): -55°C ~ +105°C

### Physical/物理特性:

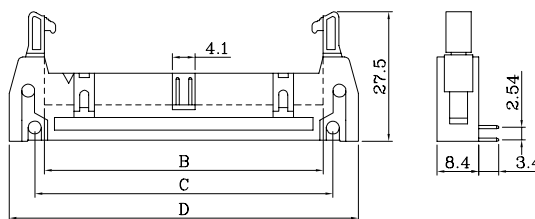
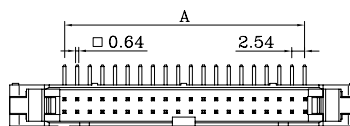
Insulator (塑胶本体): P.B.T +30% Glass Fiber  
 Flammability Rating (防火等级): UL 94V-0  
 Contacts (接触件): Phosphor Bronze or Brass  
 Contacts plating (接触件电镀): Gold over Nickel or Tin



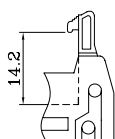
## Dimension/尺寸: mm



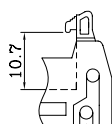
Straight/直插



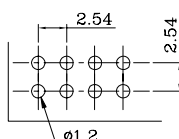
Right Angle/弯插



Long Latch/长耳



Short Latch/短耳



PCB Layout  
线路板布局图

Poles	Dim A	Dim B	Dim C	Dim D
10	10.16	17.90	21.70	31.87
14	15.24	22.95	26.88	36.95
16	17.78	25.50	29.27	39.48
20	22.86	30.58	34.50	44.62
24	27.94	35.70	39.50	49.67
26	30.48	38.25	42.05	52.23
30	35.56	43.35	47.20	57.30
34	40.64	48.40	52.15	62.38
40	48.26	56.05	59.90	69.95
50	60.96	68.70	72.55	82.70
60	73.66	81.50	85.25	95.45
64	78.73	86.40	90.35	100.60

## Ordering Code/订购型号:

1 2 3 4 5 6  
 301 S - 40P S B - 4

1. Series No./系列号: 301

2. PCB Mount Type/安装类型:

S = Straight DIP Type(直插)

R = Right Angle DIP Type(弯插)

3. Poles/位数: 10~64P

4. Contacts plating/接触件电镀:

N/A(缺省) = Gold Flash(全金)

S = Selective Gold(半金)

5. Latch Option/锁扣选项:

B = Short Latch(短耳)

N/A(缺省) = Long Latch(长耳)

6. Color/胶体颜色:

N/A(缺省) = Black(黑色)

4 = Grey(灰色)